



*life. to the fullest.®*





*life. to the fullest.®*





*life. to the fullest.®*



*life. to the fullest.®*



# Abbott is reimagining innovation for a better, healthier world

CREATING LIFE-CHANGING TECHNOLOGIES THAT  
ARE BOTH **ACCESSIBLE AND AFFORDABLE**

---

HELPING MORE PEOPLE IN MORE PLACES  
**LIVE HEALTHIER AND BETTER LIVES**

---

CREATING A HEALTHIER, **MORE SUSTAINABLE**  
**WORLD AND BUSINESS**

---

Our goal is to help improve the lives of one in  
every three people on this planet by 2030.



# Shaping the future of health: putting more control of your health in your hands

## DIGITIZE

Connect people with meaningful, timely, accurate and actionable information about their health

## DEMOCRATIZE

Make health tech accessible, personal and convenient so more people in more places can benefit from it

## DECENTRALIZE

Deliver care where and when it's needed beyond the hospital or clinic



# Abbott at a glance

114,000

PEOPLE

135+

YEARS IN BUSINESS

160+

COUNTRIES

\$42B

2024 SALES

## TRUSTED PRODUCTS

FreeStyle Libre 

MitraClip™

Similac®

Alinity

Ensure

pediaSure®

Duphaston®  
Hydrogesterone

BinaxNOW™

 Pedialyte

Eterna™  
SCS System

 BurstDR™  
Stimulation

Xience™

BRUFEN

AVEIR™ VR  
Leadless Pacemaker

Products may not be available in all markets.

# Abbott is leading the way in human-powered health

CONNECTING PEOPLE AND THEIR DOCTORS WITH  
ACCURATE, TIMELY INSIGHTS ABOUT THEIR HEALTH

---

## NEUROSPIHERE™ VIRTUAL CLINIC

Remote care of patients with chronic pain  
and movement disorders



## CARDIOMEMS™ HF SYSTEM

Remote heart failure monitoring system  
proven to reduce hospital admissions



## ASSERT IQ™ INSERTABLE CARDIAC MONITOR

Smartphone-enabled device to monitor  
for abnormal heart rhythms





# Abbott is leading the way in human-powered health

## PROVIDING THE RIGHT TEST IN THE RIGHT PLACE AT THE RIGHT TIME

### i-STAT® ALINITY® TBI RAPID TEST

Tests to help evaluate concussions quickly



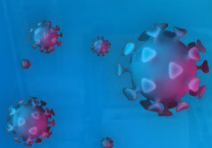
### BinaxNOW™

Fast, accurate test results for COVID-19 in  
a convenient at-home testing kit



### ABBOTT PANDEMIC DEFENSE COALITION

Hunting down viruses to help prevent future  
pandemics and provide testing



### ALINITY s® SYSTEM

Helping protect the blood and plasma supply



# Abbott is leading the way in human-powered health

## PERSONALIZING HEALTH AND NUTRITION BY UNDERSTANDING WHAT OUR BODIES ARE TELLING US

### FREESTYLE LIBRE® PORTFOLIO

Continuous monitoring of glucose levels to drive improved health outcomes for people with diabetes



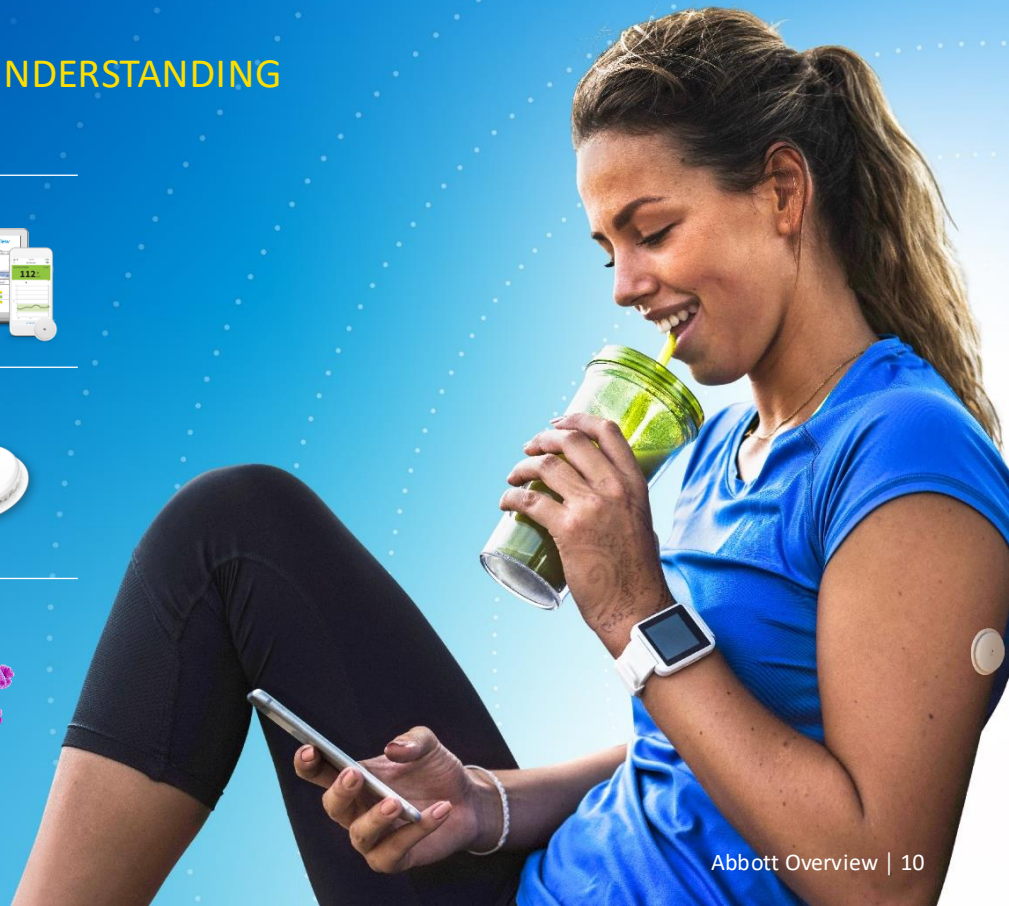
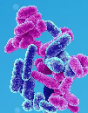
### LINGO™

Lingo™ is designed to help consumers monitor and track glucose, ketones and lactate to make informed decisions about their health, nutrition and overall well-being



### STUDYING THE GUT MICROBIOME

Advancing nutrition solutions to support immunity, digestive health and brain development





# We help people live fuller, healthier lives, maximizing their potential at all ages and stages of life

## CONSUMER BIOWEARABLES

Lingo™ is designed to help consumers monitor and track glucose, ketones and lactate to make informed decisions about their health, nutrition and overall well-being



## NEUROMODULATION CARE

Treating chronic pain and movement disorders by targeting specific areas of the brain and nervous system



## CARDIOVASCULAR CARE

Helping people and their doctors better manage cardiac and peripheral vascular health using cutting-edge technologies



## NUTRITION

Using the latest science to create better ways to nourish bodies from infancy to adulthood



## DIABETES CARE

Making diabetes management easy, effective and affordable so that people can spend less time thinking about diabetes and more time living



## MEDICINES

Helping people get and stay healthy with quality medicines they can trust



## DIAGNOSTICS

Providing accurate, timely information to guide effective treatment decisions





# Lasting values

## PIONEERING

We see needs first and deliver game-changing solutions

## ACHIEVING

We focus relentlessly on delivering for our stakeholders

## CARING

We treat the people who depend on us as if they were our own family

## ENDURING

We know that everything we do today should contribute to a stronger tomorrow



# Leading in connected care with technology

## CARDIOVASCULAR

- Electrophysiology
- Heart failure
- Cardiac rhythm management
- Structural heart
- Vascular care

## DIABETES CARE

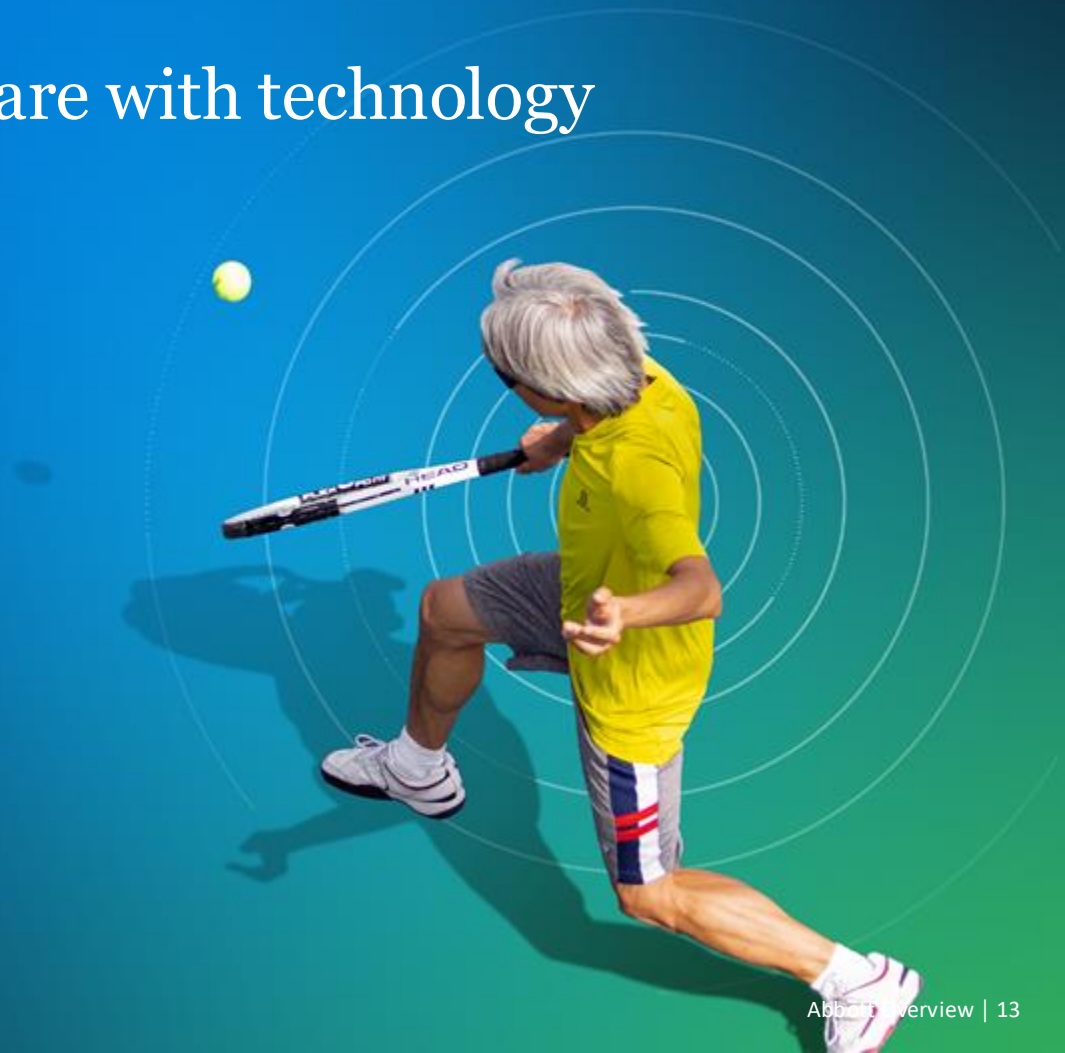
- Continuous glucose monitoring

## NEUROMODULATION

- Brain therapies
- Chronic pain therapies

## CONSUMER BIOWEARABLES

- Lingo™ is designed to help consumers monitor and track glucose, ketones and lactate to make informed decisions about their health, nutrition and overall well-being



# Electrophysiology

Portfolio includes:

## ENSITE™ X EP SYSTEM

State-of-the-art cardiac mapping system provides 3D models of the heart and its electrical activity



## ADVISOR™ HD GRID MAPPING CATHETER, SENSOR ENABLED™

First-of-its-kind electrode configuration to create more highly detailed maps of the heart



## TACTIFLEX™ ABLATION CATHETER, SENSOR ENABLED™

Next-generation device that is designed for intuitive, safe and effective treatment of heart rhythm disorders





# Heart failure

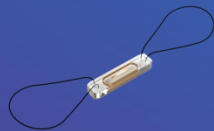
Therapies across the heart-failure disease spectrum:

---

## CARDIOMEMS™ HF SYSTEM

Pulmonary artery pressure monitoring can provide early detection of worsening heart failure

---



## HEARTMATE 3™ LEFT VENTRICULAR ASSIST DEVICE (LVAD)

Heart pump for patients in advanced stage heart failure is the first to use Full MagLev™ Flow Technology

---



## CENTRIMAG™ CIRCULATORY SUPPORT SYSTEM

Machine that temporarily takes over the function of the heart and lungs so they can rest and heal

---



# Cardiac rhythm management

Portfolio includes:

## INSERTABLE CARDIAC MONITORS

Bluetooth®-compatible devices that help doctors catch hard-to-detect arrhythmias



## CARDIAC RESYNCHRONIZATION DEVICES

Help the heart pump in a more coordinated way



## IMPLANTABLE CARDIAC DEFIBRILLATORS

MRI-safe devices that help slow abnormally fast-beating hearts



## PACEMAKERS

MRI-safe devices that restore normal heart rhythm



Bluetooth and Bluetooth logo are registered trademarks of Bluetooth SIG, Inc.

# Structural heart

Broadest portfolio of heart-valve repair, replacement technologies and occlusion devices.

## TRANSCATHETER-VALVE REPAIR AND REPLACEMENT DEVICES

- **MitraClip™ and TriClip™**  
Repair for leaking mitral and tricuspid valves
- **Tendyne™**  
Novel mitral-valve implantation system
- **Navitor™**  
Valve replacement system to treat aortic stenosis



## SURGICAL MECHANICAL AND TISSUE HEART VALVES

- **Epic™ Plus**  
Mitral and aortic stented tissue valves
- **Regent™ and Masters**  
Mitral and aortic mechanical heart valves



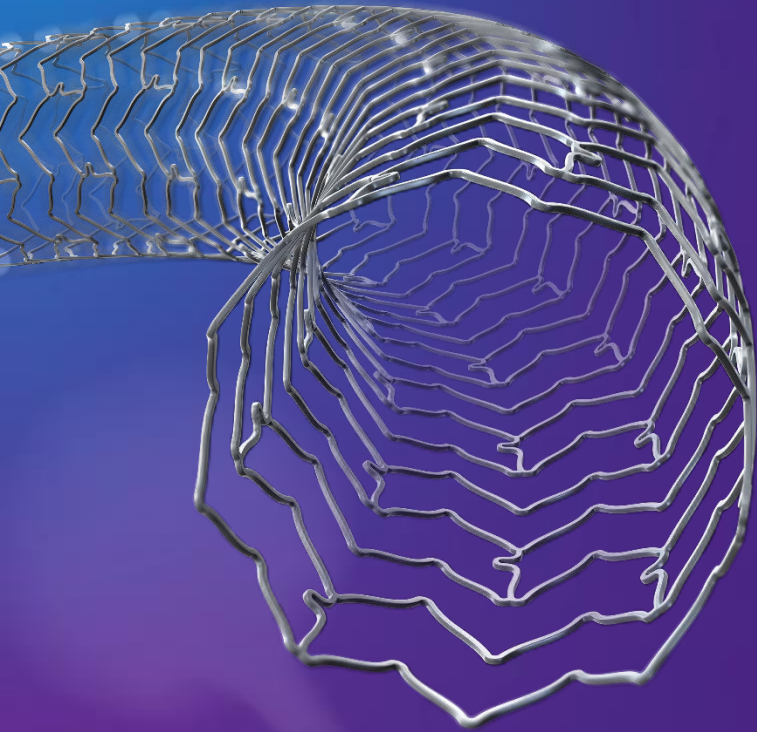
## STROKE MITIGATION AND CONGENITAL HEART DISEASE DEVICES

- **Amplatzer™ PFO and Amulet™ Occluders**  
Reduce the risk of stroke
- **Amplatzer Piccolo™ Occluder**  
Designed to fix a congenital heart defect in premature babies





# Vascular care



Minimally invasive products designed to optimize the treatment of coronary and peripheral vascular disease.

## **XIENCE™ FAMILY OF STENTS**

Market-leading DES stent systems designed to treat complex cases



## **ULTREON™ 2.0 SOFTWARE**

AI-driven imaging diagnostic solution to give better insights to optimize patient outcomes



## **ESPRIT™ BTK SYSTEM**

The only FDA-approved drug-eluting, below-the-knee resorbable scaffold

## **DIAMONDBACK 360™ SYSTEM**

An innovative, new approach to treating peripheral artery disease



## **PERCLOSE™ PROSTYLE™ DEVICE**

Next-generation system delivering secure, non-masked percutaneous sutures

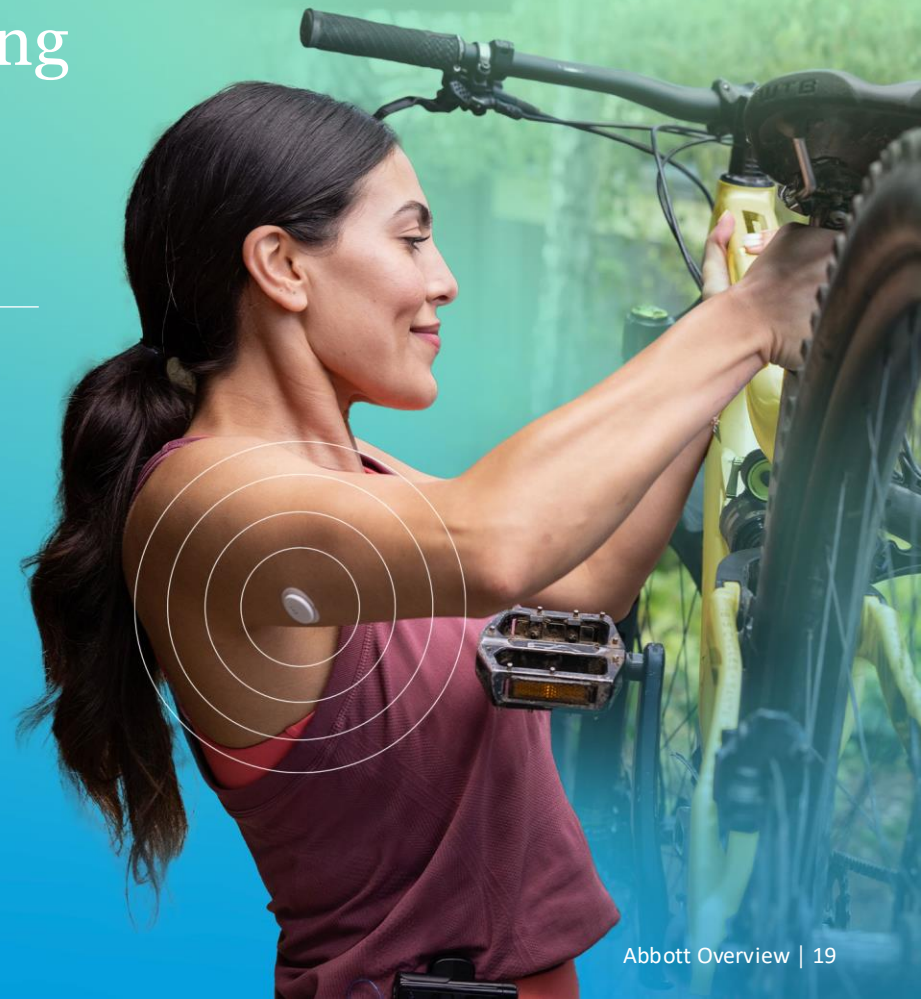
# Continuous glucose monitoring

Providing accurate results faster and with greater convenience, so people can continuously monitor their glucose levels with minimal pain or disruption.

**#1 worldwide, with more than 6 million users<sup>1</sup>**

## FREESTYLE LIBRE® PORTFOLIO

- Discreet, easy to use and eliminates painful routine fingersticks<sup>2</sup>
- Delivers unsurpassed accurate and real-time glucose readings every minute for up to 15 days<sup>3</sup>
- Provides actionable insights for improved outcomes<sup>4-6</sup>
- Affordable and accessible<sup>7</sup> to millions of people worldwide
- Allows monitoring glucose levels using a smartphone. Patient can share data automatically with the caregiver and healthcare provider via our secure, cloud-based platform
- Optional real-time glucose alarms
- Designed to communicate and connect with other devices
- FreeStyle Libre® 3 includes the smallest, thinnest, most discreet CGM sensor (size of two stacked U.S. pennies)
- FreeStyle Libre® 3 is a more environmentally sustainable system designed with 70% reduction in volume





## NEUROMODULATION DEVICES

# Chronic-pain and movement-disorder therapies

A global leader in chronic-pain solutions.

### UNIQUE PAIN-MANAGEMENT PORTFOLIO INCLUDES:

- Radiofrequency ablation
- BurstDR™ spinal cord stimulation
- Dorsal root ganglion stimulation



### BRAIN THERAPIES PORTFOLIO INCLUDES:

Targeted patient-specific treatment to help address the symptoms of Parkinson's disease and essential tremor. Available in both a rechargeable and non-rechargeable system



### NEUROSPIHERE™ VIRTUAL CLINIC

Remote care of patients with chronic pain and movement disorders





MEDICINES

# High-quality, trusted products to get and stay healthy

GASTROENTEROLOGY

---

WOMEN'S HEALTH

---

CARDIOMETABOLIC

---

PAIN MANAGEMENT/CENTRAL  
NERVOUS SYSTEM

---

RESPIRATORY

# Millions of people around the world use our products every day

## IMPROVING HEALTH THROUGH BIOSIMILARS

Making advanced biologic treatments affordable and accessible, and promoting better health and access to care

## DIFFERENTIATED OFFERING

- High-quality standards
- Reliable supply chain
- Superior clinical science
- Patient-centered innovation



## REGION-SPECIFIC PRODUCT PORTFOLIOS

- In low- and middle-income countries

## DIAGNOSTICS

# Transforming care by providing timely information to better manage health

## ADVANCED INSTRUMENT SYSTEMS

for hospitals, reference labs and blood banks

---

## LAB-BASED TESTS

for health screening, disease diagnosis and monitoring

---

## MOLECULAR DIAGNOSTICS

for managing infectious diseases and serious illnesses

---

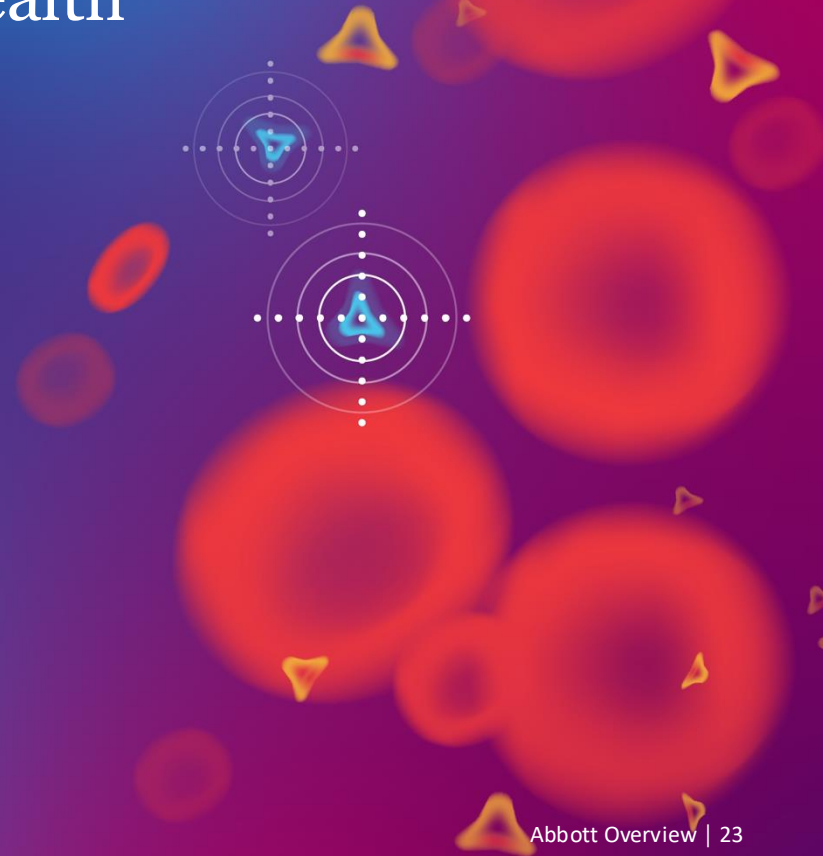
## POINT-OF-CARE TESTING

for lab-quality results in minutes

---

## SOPHISTICATED INFORMATION SOLUTIONS

that uncover insights to improve productivity and patient outcomes





# Core laboratory and molecular

Multi-platform line of next-generation instruments and informatics, offering significant benefits for health systems:

---

**INCREASED EFFICIENCY**

---

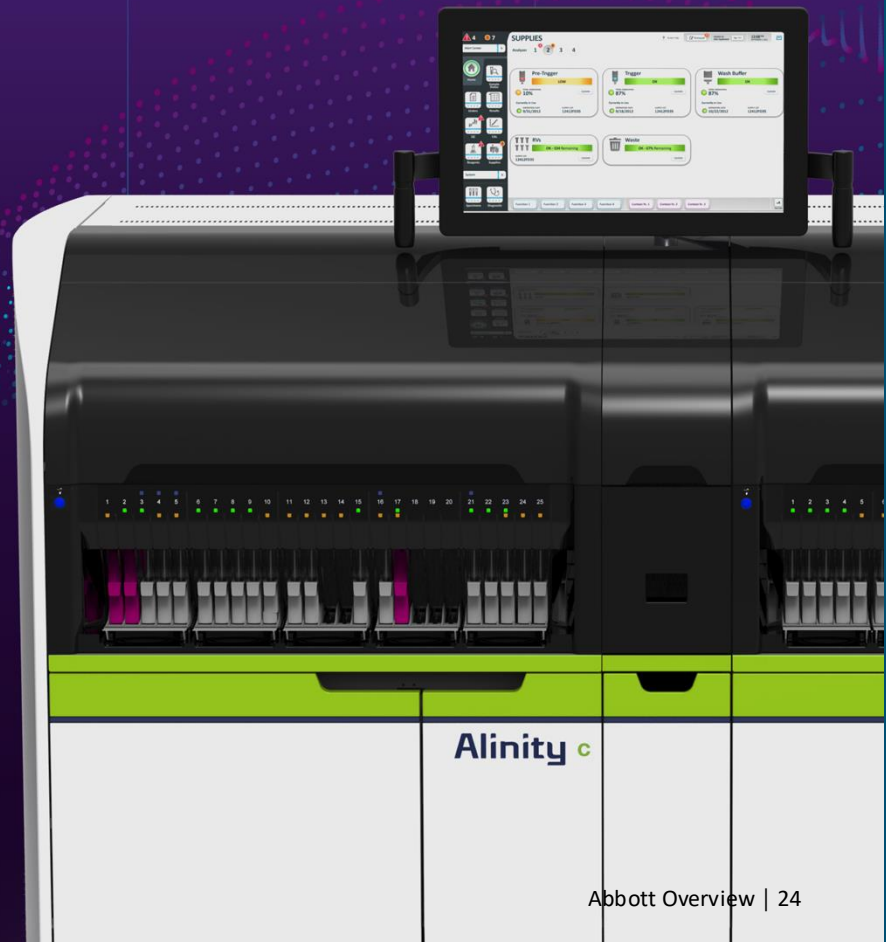
**IMPROVED WORKFLOW**

---

**BETTER HEALTHCARE PERFORMANCE**

0.01

0.02



## DIAGNOSTICS

# Rapid and point-of-care testing

A world leader in point-of-care testing.

### PATIENT-SIDE TESTING

Designed to improve the overall quality of care and help our customers provide better clinical and economic healthcare outcomes



### RAPID MOLECULAR TESTING

Gives doctors the insight they need — in just minutes — to deliver the right care at the right time with molecular precision



### LATERAL FLOW TESTING

Provides results in minutes, even in remote areas with portable and affordable tests



### DIGITAL SOLUTIONS

Innovative apps that manage test results and help track diseases as they move through populations



NUTRITION

# Science-based products for every stage of life

PEDIATRIC

---

ADULT

---

MEDICAL

---

REHYDRATION





## NUTRITION

# Pediatric

#1 brand fed in hospitals (U.S)\*

### SIMILAC®

Our line of infant and toddler formulas designed to support healthy growth and development



### PEDIASURE®

Designed to support children's growth with essential vitamins and minerals



### PEDIALYTE®

Oral electrolyte solution specially formulated to help prevent mild to moderate dehydration in children and adults



\*Similac is the #1 brand fed in U.S. hospitals; data on file.





## NUTRITION

# Adult

#1 worldwide

### ENSURE®

A line of complete, balanced and targeted nutrition products that can help people stay active and at their best



### PROTALITY™

A line of high-protein shakes that provides nutritional support and helps preserve muscle for adults pursuing weight loss

### SPECIALIZED NUTRITION

- Glucerna® (diabetes)
- Juven® (supports wound healing)
- Nepro® (kidney disease requiring dialysis)
- Tube-feeding products





# Peace of mind

Creating quality health products as if they're for our own families, with integrity in everything we do





# A sustainable future starts with health

## IT'S THE FOUNDATION FOR EVERYTHING.

It helps people thrive, makes communities strong and fuels healthy societies.

At Abbott, sustainability means managing our company to deliver long-term impact for the people we serve — shaping the future of healthcare and helping the greatest number of people live better and healthier.



# Life-changing work at a company that enables employees to grow and learn, care for themselves and family, and live their fullest lives

We offer development and advancement opportunities that allow every employee to achieve their full potential

---

Employees can participate in physical, emotional and financial well-being programs that help them take care of themselves and their families

---

Our diverse and inclusive global community allows us to work together to help people live healthier lives



# Meaningful rewards to help Abbott people lead their fullest lives

Competitive compensation and benefits programs

---

Wellness and fitness initiatives

---

Award-winning internship programs

---

Freedom 2 Save™: Student debt program

---

Freedom to Work: Phased retirement program







# Making a meaningful difference

*Fortune's "Most Admired Companies" since 1984*

---

Dow Jones Sustainability Index since 2005;  
industry sector leader for 11 years

---

Named one of *Newsweek's* "America's Most Responsible Companies" in 2024

---

FAIR360 "Top 50 Companies for Diversity"

---

Recognized as a workplace leader around the world

---

"Top 20 Employer," *Science* magazine

---

Award-winning innovation across our company

# References for slide 18

1. Data on file. Abbott.
2. Fingersticks are required if your glucose alarms and readings do not match symptoms or when you see Check Blood Glucose symbol during the first 12 hours. Fingersticks are required for treatment decisions when you see Check Blood Glucose symbol, when symptoms do not match system readings, when you suspect readings may be inaccurate, or when you experience symptoms that may be due to high or low blood glucose.
3. Data on file. Abbott Diabetes Care.
4. The *LibreLinkUp* app is only compatible with certain mobile device and operating systems. Please check [www.librelinkup.com](http://www.librelinkup.com) for more information about device compatibility before using the app. Use of the *LibreLinkUp* app requires registration with LibreView, a service provided by Abbott and Newyu, Inc.
5. Miller, Brandner et al. HbA1c Reduction After Initiation of the *FreeStyle Libre* System in Type 2 Diabetes Patients on Long-Acting Insulin or Non-Insulin Therapy.
6. Acute diabetes complications defined by hypoglycemia, hypoglycemic coma, hyperglycemia, ketoacidosis, or hyperosmolarity ICD-10 codes as primary diagnosis for inpatient or as any position in the outpatient emergency claim; Matthew Kerr, Gregory Roberts, Diana Souto, Yelena Nabutovsky.
7. Based on a comparison of list prices of the *FreeStyle Libre 2* and *FreeStyle Libre 3* systems versus competitors' CGM systems, assuming annual use of one receiver (or equivalent hardware) and quantity of transmitters and/or sensors according to use life. The actual cost to patients may or may not be lower than other CGM systems, depending on the amount covered by insurance, if any.



*life. to the fullest.®*

**Abbott**